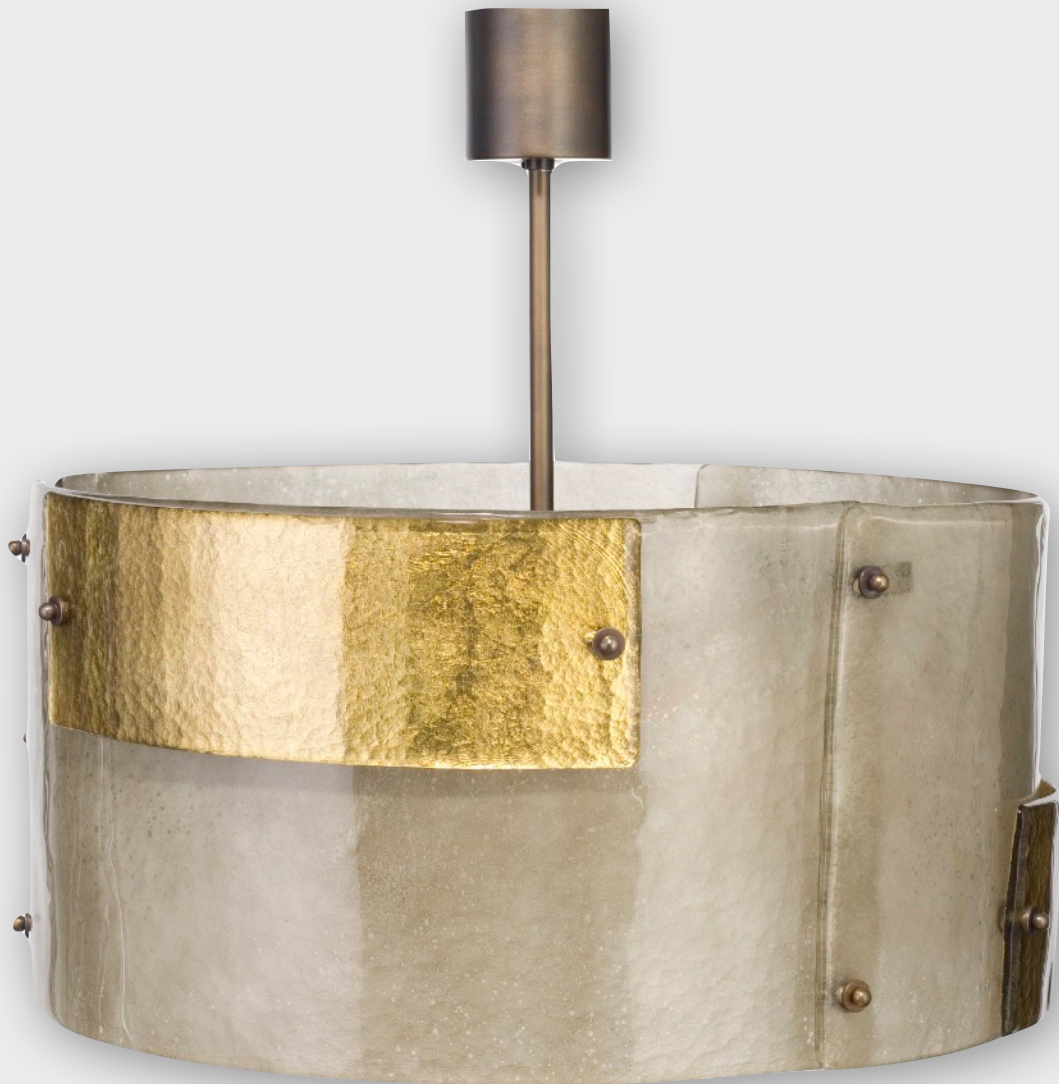


CHARLES BURNAND
LONDON



LUNA PIENA DRUM

BUR142

Hand floated Murano glass, gold leaf, patinated brass

Dimensions

Drum Depth 35 cm
Drum Diameter 70 cm

Bespoke size and finishes available on request

CHARLES BURNAND

15 Crawford Street, London W1H 1BR

Tel: +44 (0)20 7993 4968 email: info@charlesburnand.com www.charlesburnand.com



CHARLES BURNAND

15 Crawford Street, London W1H 1BR

Tel: +44 (0)20 7993 4968 email: info@charlesburnand.com www.charlesburnand.com